

# Incorporating climate change scenarios into freshwater conservation planning

Eren Turak  
Department of Environment and Climate Change  
NSW, Australia

Department of Environment & Climate Change NSW

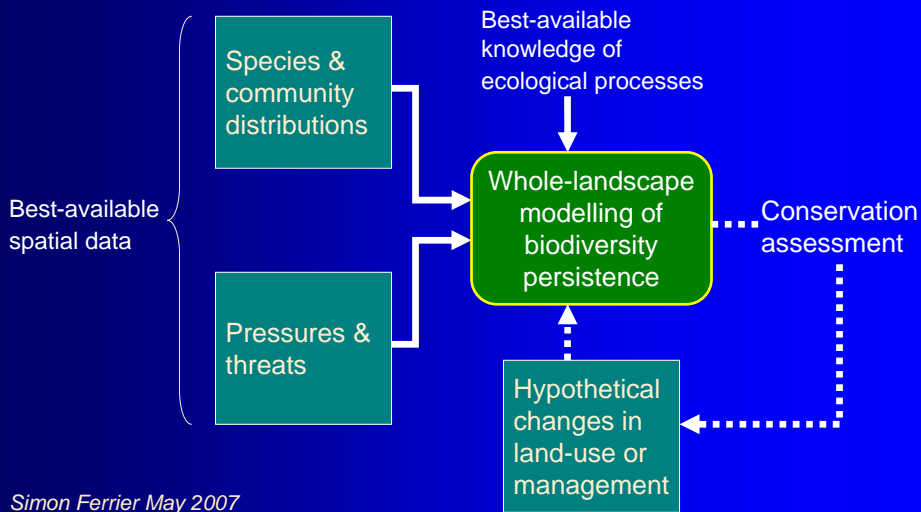
1

- Modelling persistence of terrestrial biodiversity
- Incorporating climate change
- A freshwater approach
- Multi-attribute river types as surrogate features

Department of Environment & Climate Change NSW

2

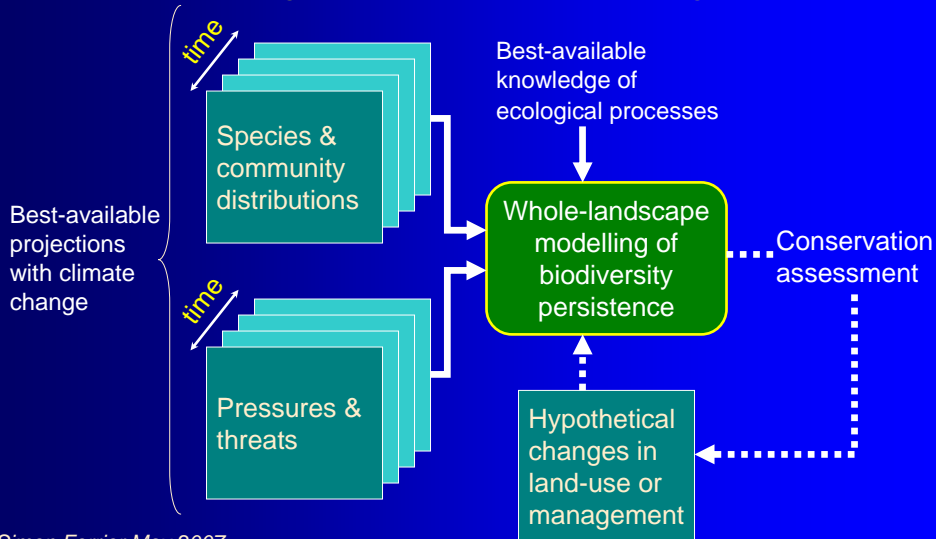
### A approach to conservation planning for terrestrial biodiversity



Simon Ferrier May 2007

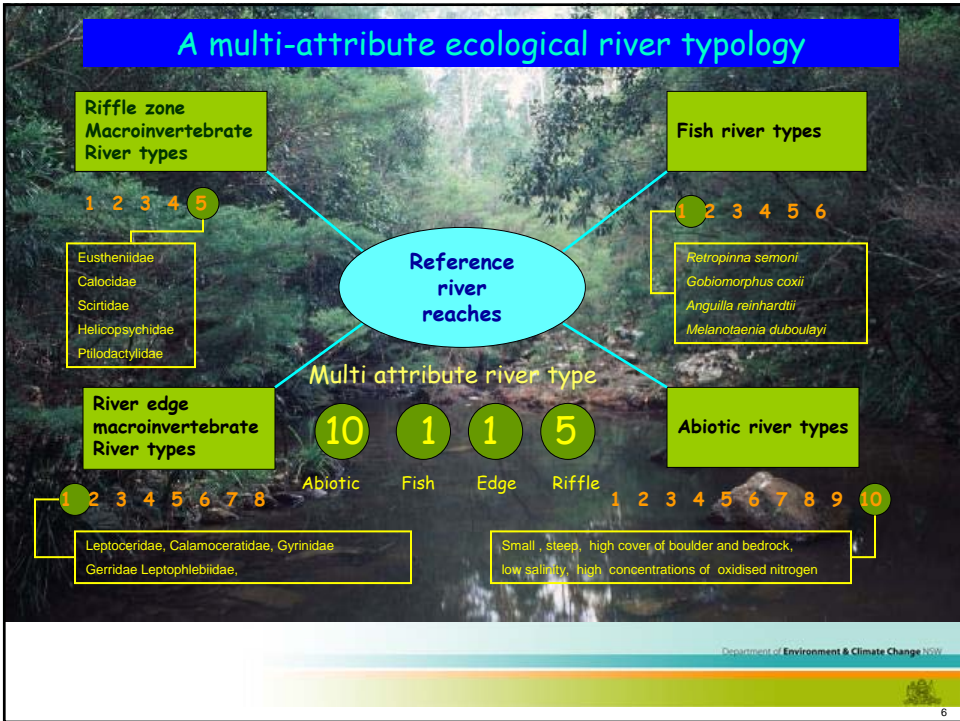
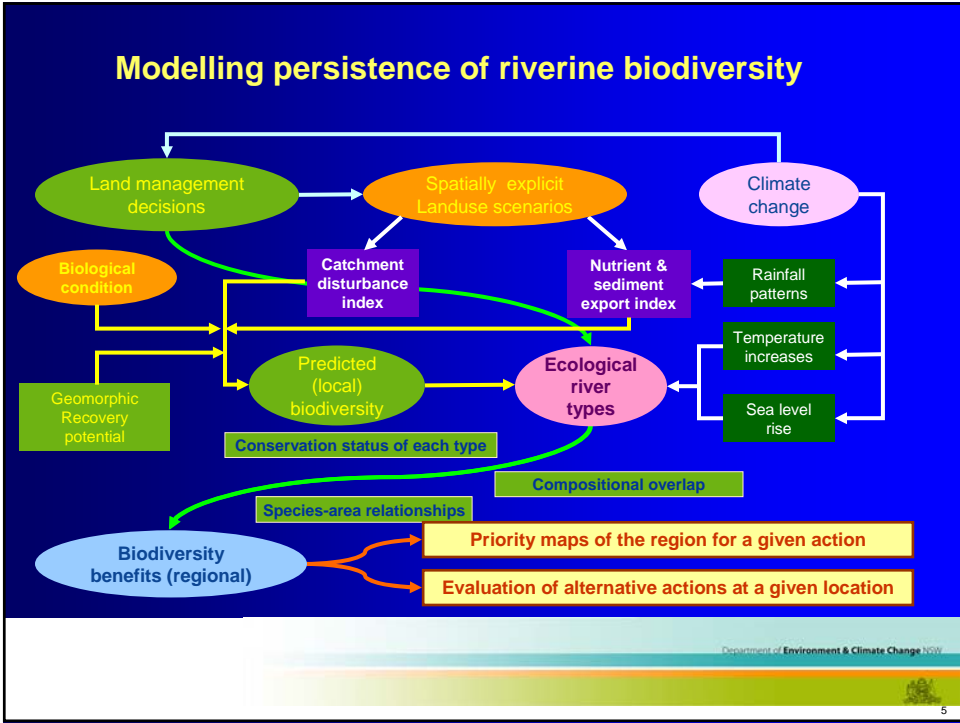
Department of Environment & Climate Change NSW

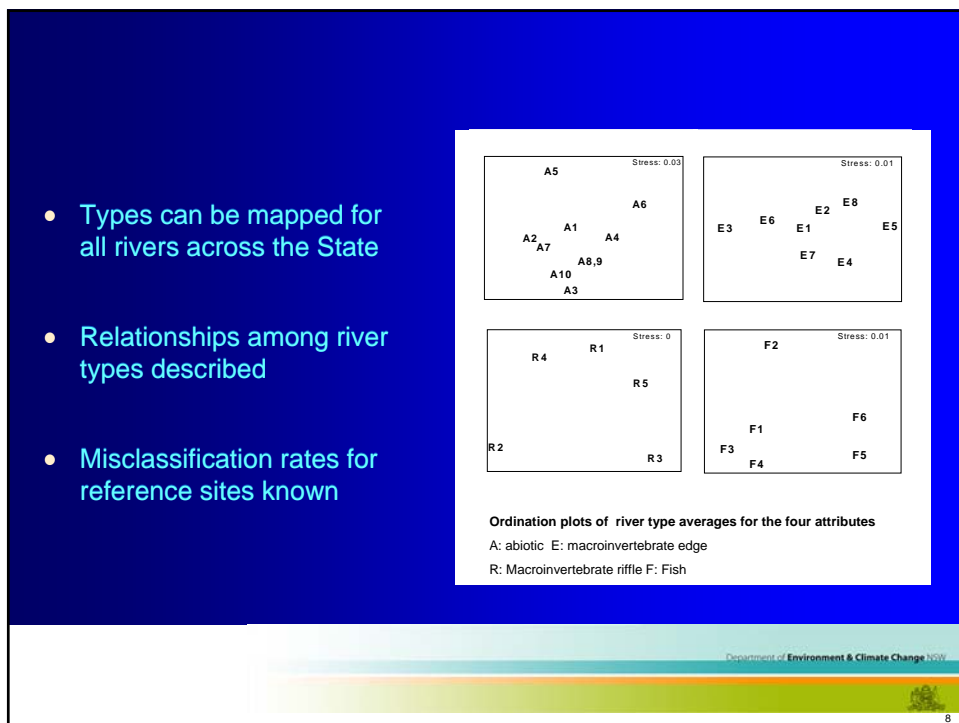
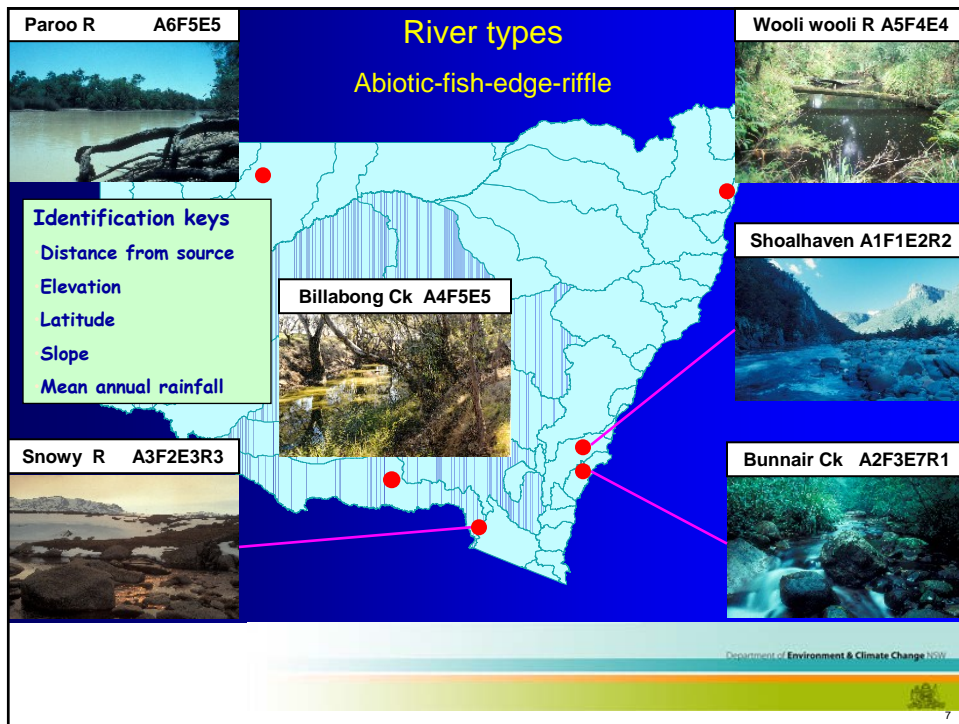
### Accommodating projected climate-change impacts:

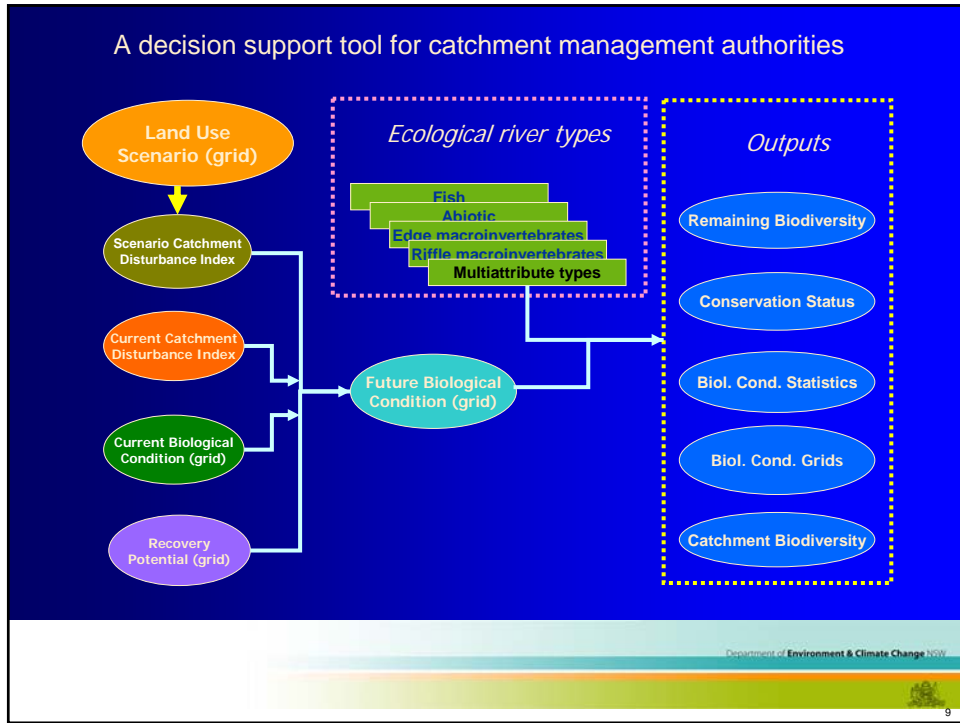


Simon Ferrier May 2007

Department of Environment & Climate Change NSW







- ## Building climate change response algorithms
- (for completion by end 2010)
- Climate change, landuse links
  - River type boundaries
    - The likely effect of temperature increases and sea level rises: species and community modelling
    - Effect of rainfall scenarios: flow modelling
  - Pressures
    - Flow modelling
    - Temperature effects on geomorphological processes
- Department of Environment & Climate Change NSW
- 10